

FABRICS & CUSHION

The best design is nothing without the right materials. Excellent products can only be created, if they are shaped in selected materials; the very best raw materials, elegant fabrics, premium wood and high quality metals.

Our materials extend the Saveri philosophy of “Natural & Authentic “. Inspired by nature, they reflect the zeitgeist and represent the company’s expertise in trend-setting interiors with new material combinations.



CUSHION FABRICS

We are using Sunbrella® and Sunproof® only. Both offer a wide range of over thousand different designs.

FEATURES

All Sunbrella fabrics we select, are OEKO TEX certified. Sunbrella as well as Sunproof fabrics provide the following features

- Outdoor fabrics with a high color fastness
- Water repellent
- High UV protection
- Anti-stain treatment

THE FOAM

we offer standard foam and quick dry foam

Our seat cushion upholstered with 23-35 kg/cbm foam. Thick seat cushion upholstered in a sandwich style of foam, which creates the most comfortable seating comfort.

TR ROPE

For our Madison Collection we are using TR rope only. This rope is made out of robust outdoor fibers, also used in the yacht-building or alpine climbing . The rope is braided around a soft and dimensionally stable caoutchouc. The result is a soft and comfortable seat comfort.

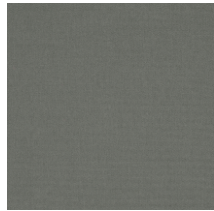
FABRICS

SaVeri

Sunbrella®



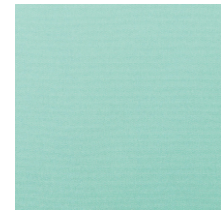
GR granite
(5402)



CH charcoal
(54048)



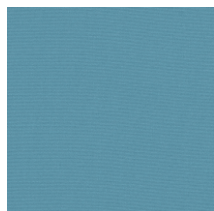
PE peach
(3962-137)



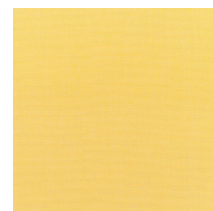
IC glacier
(5428)



RD blush
(57000)



BL mineral blue
(5402)



YE buttercup
(5438)

Sunproof® Cartenza



SW now white
(c 130)



TB taube
(C 161)

TR rope



SG silver grey
(F 31)



CH charcoal
(F 22)

Deco cushion



40
CN 400040-01



45
CN 400050-01



50
CN 605150-01



25
CN 605102-01

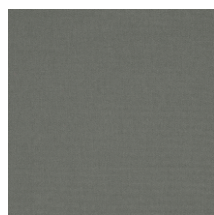


25
CN 605101-01

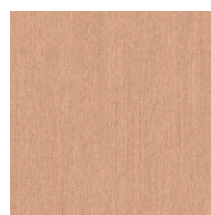
Sunbrella® fabrics



GR granite
(5402)



CH charcoal
(54048)



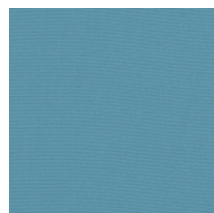
PE peach
(3962-137)



IC glacier
(5428)



RD blush
(57000)

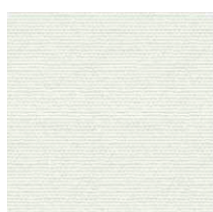


BL mineral blue
(5420)



YE buttercup
(5438)

Sunproof® Cartenza fabrics



SW now white
c 130)



TB taube
C 161)